



SERA

ROHI STOFFE GMBH / schoenlinderstr. 1, 82538 geretsried, germany / t +49-8171-93540 / f +49-8171-935499 / info@rohi.com / www.rohi.com



GEWEBEBESCHREIBUNG

Dessin: SERA
Material: 94% WV 6% PA
Gewicht ca.: 650 g/m² - 910 g/lfm
Breite ca.: 140 cm

QUALITÄTSBESCHREIBUNG

Scheuerfestigkeit: 122.000 Touren DIN EN ISO 12947-2

Flammschutz: bitte angeben
FAR 25.853 (12 Sek. vertikal)
CAL TB 117 - 2013
DIN 4102-1 B2
EN 13501-1
EN 1021 -1 und -2
BS 5852:2006 (part1)
BS 5852:2006 (part2) Crib5
IMO: 2014/90/EU Schiffsausrüstungsrichtlinie

Akustik: R_s=1059 Pa s/m DIN EN 29053 Strömungswiderstand
Schallabsorption: gerafft: α_w = 0,75 (H) / C / ISO 11654
Ökologie: RAL-UZ 117 Anlage 2+3
Lichtdurchlässigkeit: EN 410 (DIN EN 14501)
Lichteinheit: min. 5-8 EN ISO 105-B02
Pilling: min. 4-5 EN ISO 12945-2
Dimout Option auf Anfrage

QUALITÄTSMERKMALE – ROHI WOLLE

natürlich nachwachsender Rohstoff
Wolle ist von Natur aus schwer entflammbar,
pflegeleicht, atmungsaktiv und schmutzabweisend
langlebig, hoch strapazierfähig
reine Schurwolle – Kammgarnqualität

QUALITÄTSMERKMALE – ROHI STOFFE

Garnfärbung für bestmögliche Farbbrillanz
und hohe Lichteinheit
Spezialausrüstung gegen Schrumpfung und Pillingneigung
Produktion und Design in Deutschland seit 1933
individuelle Stoffentwicklung
für Architektur- und Designkonzepte

DESCRIPTION OF FABRICS

Design: SERA
Content: 94% WV 6% PA
Weight approx.: 650 g/m² - 910 g/lm
Width approx.: 140 cm

QUALITY DETAILS

Abrasion: 122.000 rubs DIN EN ISO 12947-2

Flammability: please specify
FAR 25.853 (12 sec. vertical)
CAL TB 117 - 2013
DIN 4102-1 B2
EN 13501-1
EN 1021 -1 and -2
BS 5852:2006 (part1)
BS 5852:2006 (part2) Crib5
IMO: 2014/90/EU Marine Equipment Directive (MED)

Acoustic: R_s=1059 Pa s/m DIN EN 29053 flow resistivity
Sound absorption: folded: α_w = 0.75 (H) / C / ISO 11654
Ecology: RAL-UZ 117 Attachment 2+3
Light transmission: EN 410 (DIN EN 14501)
Lightfastness: min. 5-8 EN ISO 105-B02
Pilling: min. 4-5 EN ISO 12945-2
Dimout option on request

QUALITY CHARACTERISTICS – ROHI WOOL

natural, renewable material
wool is flame retardant, easy-care,
breathable and dirt resistant
long-lasting, hard-wearing
virgin wool – worsted yarn quality

QUALITY FEATURES – ROHI FABRICS

yarn dyed for brilliant colours and
good lightfastness
special finish: anti-shrink, anti-pilling
production and design 'Made in Germany' since 1933
development of individual fabrics for
architects' and designers' concepts



aktuellste Spezifikationen /
latest specifications:

rohi.com/sera



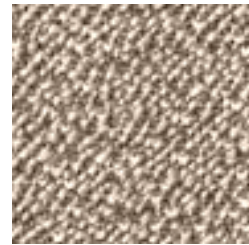
SERA



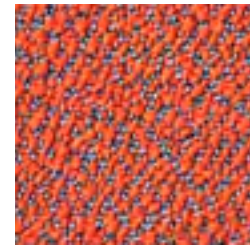
snow



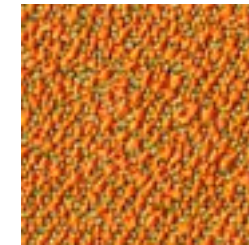
calla



flanell



glow



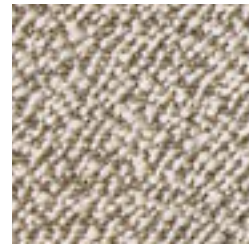
chutney



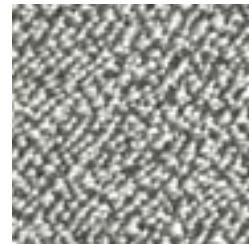
ROHI



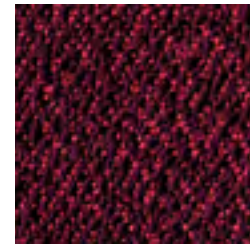
stone



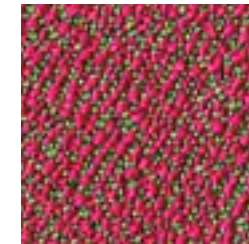
almond



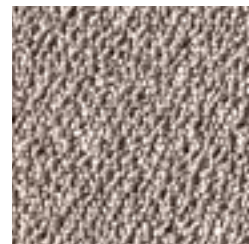
porcelain



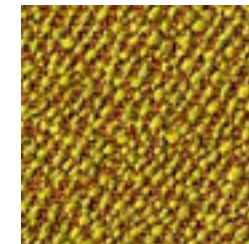
berry



lotus



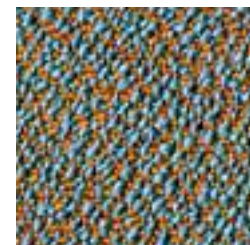
mirror



tivoli

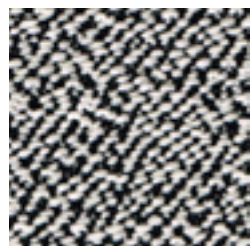


taupe



mirage

NATURAL MATERIAL
SOFT TOUCH
HIGHEND QUALITY
YARN DYED
VIRGIN WOOL
DESIGN
MANUFACTURE
EASY CARE
LASTING VALUE



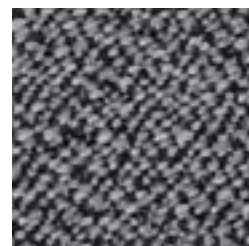
pepper



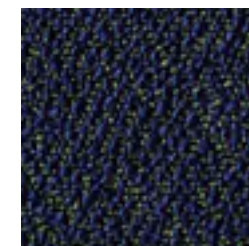
fango



walnut



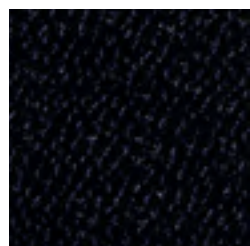
carbon



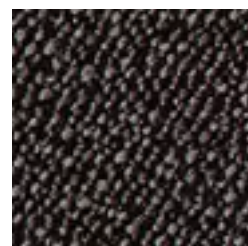
mare



torba



ebony



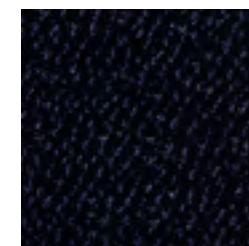
graphit



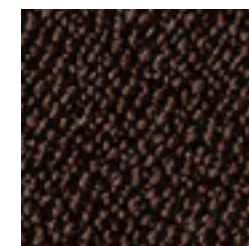
gravel



anthrazit



amur



rosewood