



ROHI

MICA

MICA



melba



corn



mirror



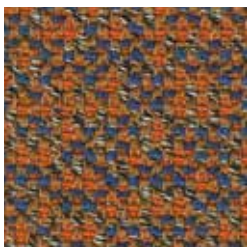
flanell



calla



aqua



sanddorn



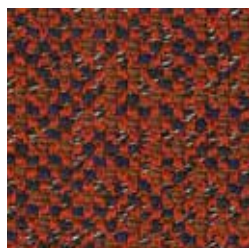
papillon



reseda



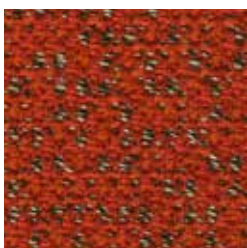
breva



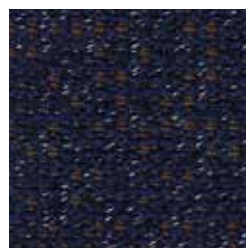
indio



sesam



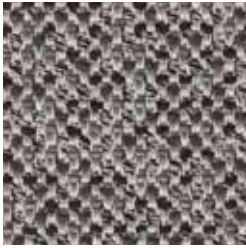
glow



night



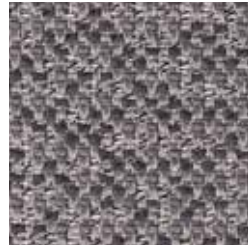
secret



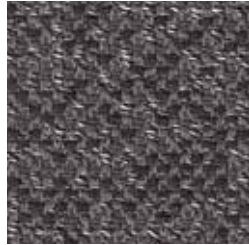
pepper



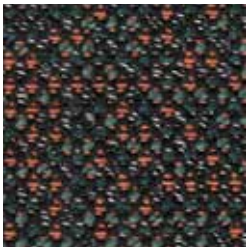
kies



fels



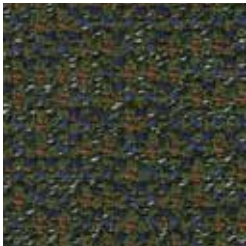
carbon



arion



black



jungle



lanoso



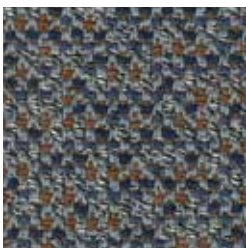
ivy



taupe



torba



delphi



peat



crisp



amber

NATURAL MATERIAL
 SOFT TOUCH
 HIGHEND QUALITY
 YARN DYED
 VIRGIN WOOL
 DESIGN
 MANUFACTURE
 EASY CARE
 LASTING VALUE

ROHI

GEWEBEBESCHREIBUNG

Dessin: MICA
Material: 95% WV 5% PA
Gewicht ca.: 600 g/m² - 840 g/lfm
Breite ca.: 140 cm

QUALITÄTSBESCHREIBUNG

Scheuerfestigkeit: ≥ 70.000 Touren ISO 12947-2
Lichtdurchlässigkeit: DIN EN 410
Lichteinheit: ≥ 5 ISO 105-B02 (Garnfärbung)
Pilling: ≥ 4-5 ISO 12945-2

reine Schurwolle – Kammgarnqualität
pflegeleicht, atmungsaktiv und schmutzabweisend
langlebig, hoch strapazierfähig
Garnfärbung für bestmögliche Farbbrillanz
und hohe Lichteinheit
nicht direkter Sonneneinstrahlung aussetzen
Produktion und Design in Deutschland seit 1933

FLAMMSCHUTZ

Wolle ist von Natur aus schwer entflammbar
rohi Wollstoffe erfüllen folgende Normen
ohne zusätzliche Flammenschutzrüstung:
CAL TB 117 – 2013
DIN EN 1021-1/-2
BS 5852 Part 1: 1979
UNI 9175 1 IM
ÖNORM B1/Q1
IMO 2014/90/EU Schiffsausrüstungsrichtlinie
mit optionaler Flammenschutzrüstung:
BS 5852: 2006 Crib5
DIN 4102-1 B2
DIN EN 13501-1 E
FAR 25.853 12 Sek. vertikal

AKUSTIK

Strömungswiderstand: $R_s = 446$ Pa s/m DIN EN 29053
Schallabsorption gerafft: $\alpha_w = 0,80$ / B ISO 11654

ÖKOLOGIE

natürlich nachwachsender Rohstoff
RAL-UZ 117 Anlage 2+3
IWTO Guidelines for Wool Sheep Welfare
FR-frei
AB 2998 (US Export Norm)
REACH (EU Export Norm)

WEITERE MERKMALE

Spezialausrüstung gegen Schrumpfung und Pillingneigung
Dimout Option auf Anfrage
individuelle Stoffentwicklung
für Architektur- und Designkonzepte
Sonderfarben ab 25 lfm

DESCRIPTION OF FABRICS

Design: MICA
Content: 95% WV 5% PA
Weight approx.: 600 g/m² - 840 g/lm
Width approx.: 140 cm

QUALITY DETAILS

Abrasion: ≥ 70.000 rubs ISO 12947-2
Light transmission: DIN EN 410
Lightfastness: ≥ 5 ISO 105-B02 (yarn dyed)
Pilling: ≥ 4-5 ISO 12945-2

virgin wool – worsted yarn quality
easy care, breathable and stain-resistant
durable, hard-wearing
yarn dyed for brilliant colours and
good lightfastness
don't expose to direct sunlight
production and design 'Made in Germany' since 1933

FLAME RESISTANCE

wool is naturally flame retardant
rohi wool fabrics satisfy the following standards
with no additional flame retardant finish:
CAL TB 117 – 2013
DIN EN 1021-1/-2
BS 5852 part 1: 1979
UNI 9175 1 IM
ÖNORM B1/Q1
IMO 2014/90/EU Marine Equipment Directive (MED)
with additional flame retardant finish:
BS 5852: 2006 Crib5
DIN 4102-1 B2
DIN EN 13501-1 E
FAR 25.853 12 sec. vertical

ACOUSTIC

Flow resistivity: $R_s = 446$ Pa s/m DIN EN 29053
Sound absorption folded: $\alpha_w = 0.80$ / B ISO 11654

ECOLOGY

natural, renewable material
RAL-UZ 117 Attachment 2+3
IWTO Guidelines for Wool Sheep Welfare
FR-free
AB 2998 (US export standard)
REACH (EU export standard)

MORE FEATURES

special finish: anti-shrink, anti-pilling
dimout option on request
development of individual fabrics for
architects' and designers' concepts
special colours from 25 lm



flame retardant



aktuellste Spezifikationen /
latest specifications:
rohi.com/mica