

Zusammensetzung <i>Composition</i>	100 % Polyester
Breite <i>Width</i>	ca. 140 cm
Gewicht <i>Weight</i>	ca. 426 g/lfm
Scheuertouren <i>Martindale rubs</i>	ca. 40.000
Kettrapport <i>Warp repeat</i>	—
Schussrapport <i>weft repeat</i>	—
Lichtehtheit <i>Color fastness</i>	5
Reibechtheit <i>Abrasion resistance</i>	nass/wet: 5 trocken/dry: 5
Pilling <i>Pilling</i>	4
Zugfestigkeit <i>Tensile strength</i>	Kette: 1476 N Schuss: 810 N
Weiterreißfestigkeit <i>Tear resistance</i>	Kette: 84,8 N Schuss: 58,5 N
Nahtschibewiderstand <i>Seam slippage</i>	Kette: 3,00 mm Schuss: 3,00 mm

STONE



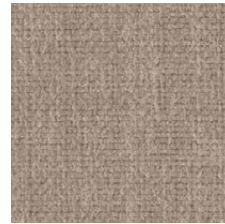
03



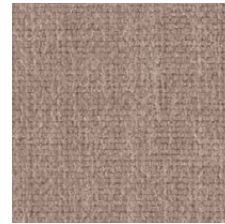
01



02



27



04



23



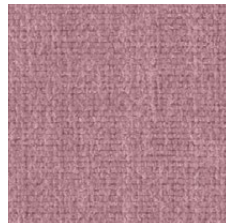
25



15



06



16



19



21



13



14



09



08



05



07



28



30



10



20



11



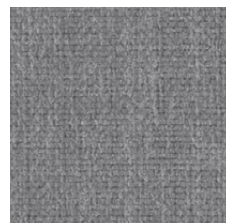
12



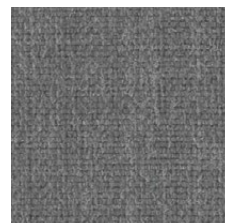
17



18



22



24



26



31



32