

olive

upholstery fabric

composition	100% pes Trevira cs®
colourways	22
width	140 cm
repeat	-
weight	966 (g/m1)
lightfastness	6 (scale 1-8)
abrasion	100000 (martindale)
pilling	4 (scale 1-5)
cleaning	🧼🚰🧴🧽
shrinkage	1%
flame resistance	BS 5852 0 + 1 part 2 crib 5, DIN 4102-B1
flame retardant	yes
labels	OEKOTEX

de ploeg:

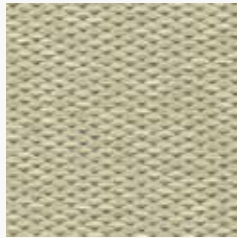


de ploeg:

olive colours



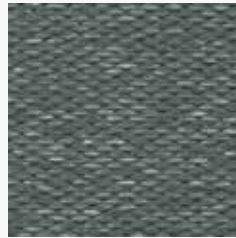
01



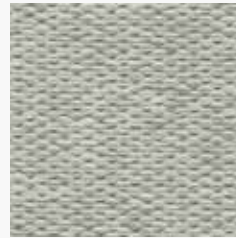
02



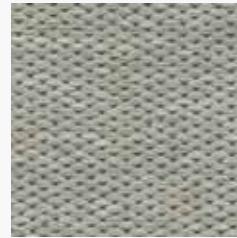
03



04



08



09



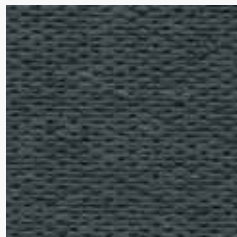
11



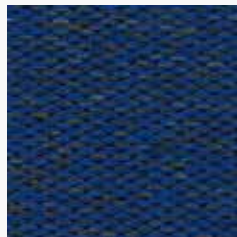
12



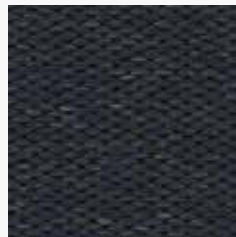
33



41



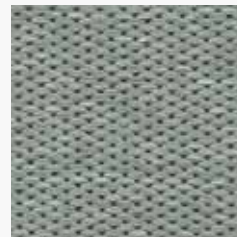
42



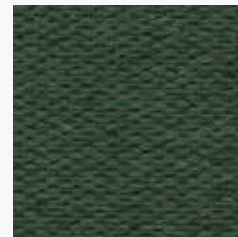
44



45



50



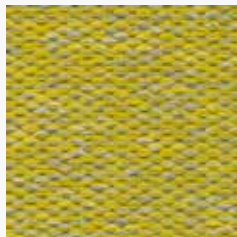
55



56



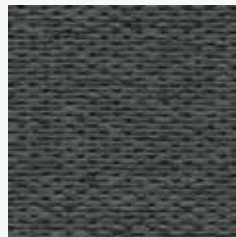
59



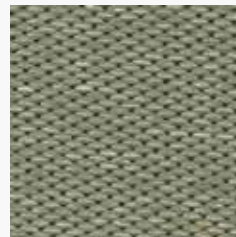
66



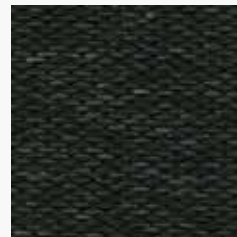
78



84



85



88