

# de ploeg: alma

curtain fabric

curtain, upholstery  
and acoustic panel fabric





alma 02



alma 08



alma 91



alma 81



alma 09



alma 84



alma 89



alma 05



alma 85



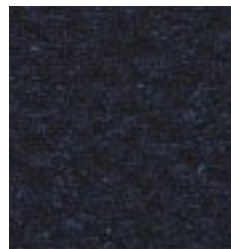
alma 44



alma 54



alma 83



alma 48



alma 88



alma 87



alma 66



alma 60



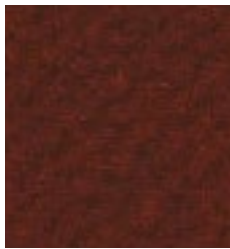
alma 67



alma 92



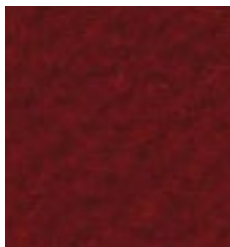
alma 90



alma 27



alma 17







alma 10



alma 13

# de ploeg: alma

<b>fabric type</b>	curtain, upholstery and acoustic panel acoustically certified
<b>application</b>	curtain/upholstery/acoustic panel
<b>colourways</b>	24
<b>composition</b>	100% PE flame retardant
<b>width</b>	140 cm
<b>repeat</b>	-
<b>cleaning</b>	  industrial wash
<b>shrinkage</b>	 <1%  <1%
<b>lightfastness</b>	6 (scale 1-8)
<b>weight</b>	540 g/m <sup>1</sup>
<b>abrasion</b>	>70.000 Martindale
<b>flame resistance</b>	ISO 6940/6941 DIN 4102-B1 NF P 92-507 M1 BS 5852 part 1+2 crib 5



**de ploeg:**

P.O. Box 298  
5700 AG Helmond  
THE NETHERLANDS

**www.deploeg.com**

**t:** +31 (0)492 38 64 60  
**f:** +31 (0)492 38 64 71  
**e:** sales@deploeg.com