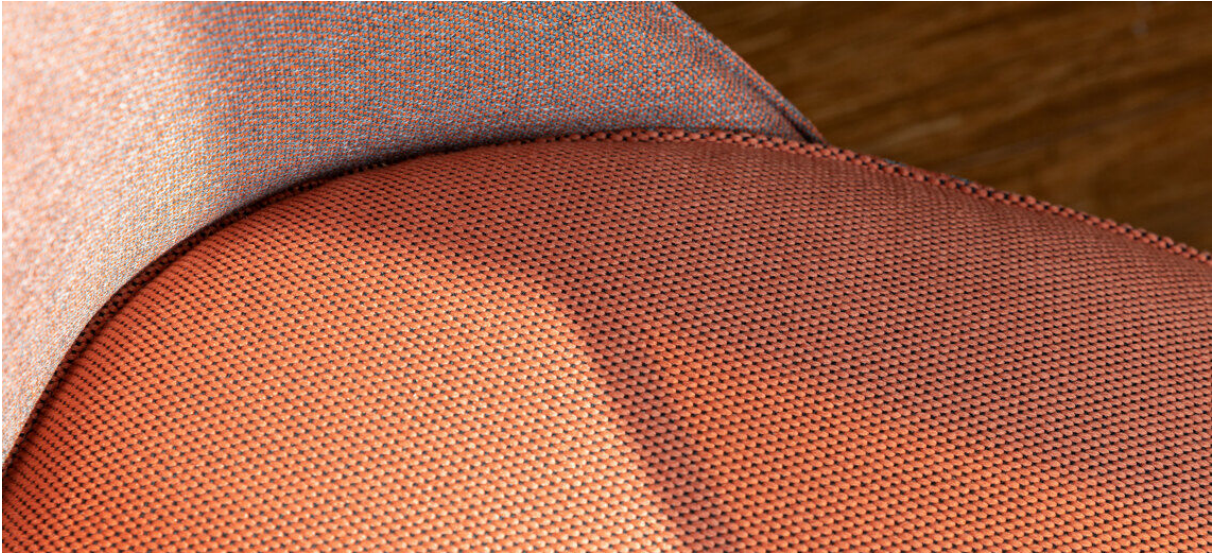


# wilson

7067.01 - 7067.21



Kollektion

**upholstery  
textile**

Beschreibung

**Unifarbener Möbelstoff aus 100 %  
recyclten PET-Flaschen, matt glänzende  
grob gewebte All-Over-Struktur mit weicher  
Haptik**

Zusammensetzung

**100% recycled polyester FR**

Breite

**± 150 cm, ± 59 inches**

Gewicht

**± 771 gr/m<sup>1</sup>, ± 25 oz/yd<sup>1</sup> fabrics**

Brandschutzklasse

**EN 1021/ 1-2**

**BS 5852, crib 5**

**NF D 60-013 (AM 18)**

**DIN 4102, B1**

**UNI 9175, classe 1.IM**

**Cal TB 117**

**NFPA 260, class 1**

**IMO 2010 FTP part 8**

Abrieb

**ISO 12947-2**

80.000 rubs martindale

**ASTM D4157**

100.000 double rubs wyzenbeek

Pillingbildung

**ISO 12945-2**

4-5 (skala 1-5)

Reibechtheit

**ISO 105-X12**

nass 4-5 / trocken 4-5 (skala 1-5)

Lichtechtheit

**ISO 105-B02**

6 (skala 1-8)

Nahtschiebewiderstand

**ISO 13936-2**

Kette 4 mm / Schuss 2 mm

Reißfestigkeit

**ISO 13934-1**

Kette 1480 N / Schuss >2500 N

Pflege



**Schrumpfwerte: Kette -1.6% / Schuss -2.8%**



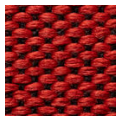
STANDARD  
100

S21-3365  
Hohenstein HTTI

# wilson

7067.01 - 7067.21

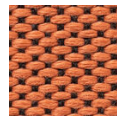
---



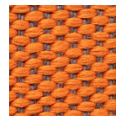
7067.01



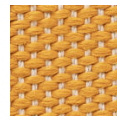
7067.02



7067.03



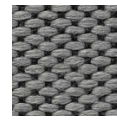
7067.04



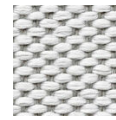
7067.05



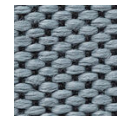
7067.06



7067.07



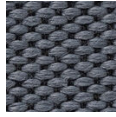
7067.08



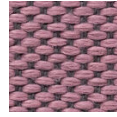
7067.09



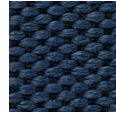
7067.10



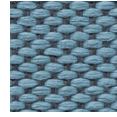
7067.11



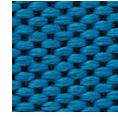
7067.12



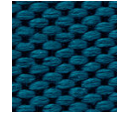
7067.13



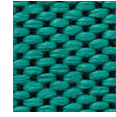
7067.14



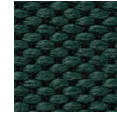
7067.15



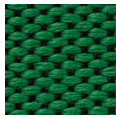
7067.16



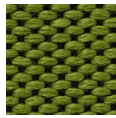
7067.17



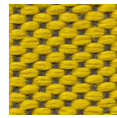
7067.18



7067.19



7067.20



7067.21