

# norfolk

7069.01 – 7069.16



## Kollektion

**upholstery  
textile**

## Beschreibung

**Zweifarbiger Möbelstoff aus 100%  
recyclten PET-Flaschen, das gleichmäßige  
Rauten-Raster führt zu einem  
dreidimensionalen Effekt**

## Zusammensetzung

**100% recycled polyester FR**

## Breite

**± 148 cm, ± 58 inches**

## Gewicht

**± 624 gr/m<sup>1</sup>, ± 20 oz/yd<sup>1</sup> fabrics**

## Brandschutzklasse

**EN 1021/ 1-2**

**BS 5852, crib 5**

**NF D 60-013 (AM 18)**

**DIN 4102, B1**

**UNI 9175, classe 1.IM**

**Cal TB 117**

**NFPA 260, class 1**

**IMO 2010 FTP part 8**

## Abrieb

**ISO 12947-2**

70.000 rubs martindale

**ASTM D4157**

100.000 double rubs wyzenbeek

## Pillingbildung

**ISO 12945-2**

4-5 (skala 1-5)

## Reibechtheit

**ISO 105-X12**

nass 4-5 / trocken 4-5 (skala 1-5)

## Lichtechtheit

**ISO 105-B02**

6 (skala 1-8)

## Nahtschiebewiderstand

**ISO 13936-2**

Kette 3 mm / Schuss 2 mm

## Reißfestigkeit

**ISO 13934-1**

Kette 1320 N / Schuss >2500 N

## Pflege



**Schrumpfwerte: Kette -2% / Schuss -3%**



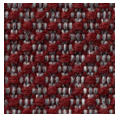
STANDARD  
100

S21-3365  
Hohenstein HTTI

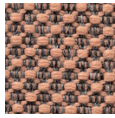
# **norfolk**

7069.01 – 7069.16

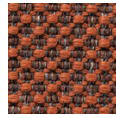
---



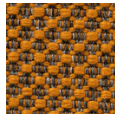
7069.01



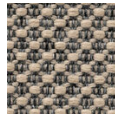
7069.02



7069.03



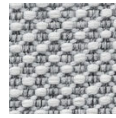
7069.04



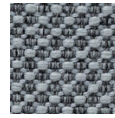
7069.05



7069.06



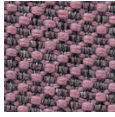
7069.07



7069.08



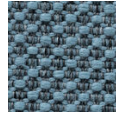
7069.09



7069.10



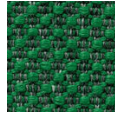
7069.11



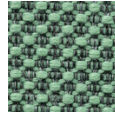
7069.12



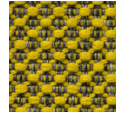
7069.13



7069.14



7069.15



7069.16