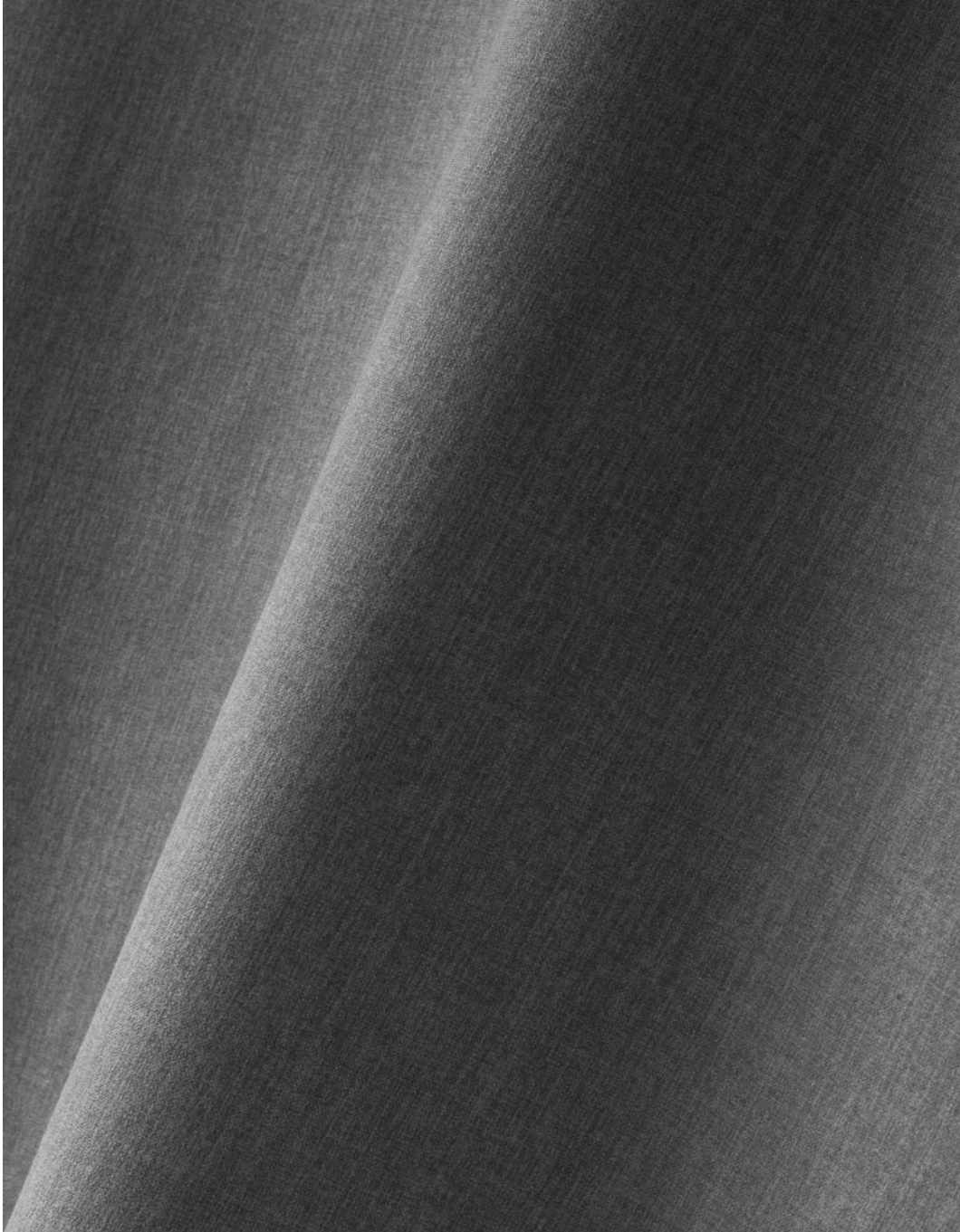




Cape





Cape

This matt and rich looking flatwoven quality is in the Textafoam Comfort Collection, a collection that consists only of soft, voluminous and elegant fabrics.

It's wonderful fine woven quality has a natural and matte look. Cape has been laminated with a non-woven backing, to create a thick and strong upholstery fabric.

Cape has been developed with comfort in mind. Durable for many years due to its optimal cleanability and resistance to moisture. Cape also has an innovative finish to provide a special and comfortable grip.

This soft fine woven textile is washable 30 degrees (machine wash) and is suitable for both fitted and loose fitting upholstery.

- Dirt and damp prevention treatment applied.
- We recommend to wash the cover inside out and immediately place the cover back to the piece of furniture, slightly damp, after washing.
- Please note that during washing the damp- and dirt prevented treatment will disappear faster.

***Textafoam originals** Established in 1970, this Dutch family business brings together craftsmen in textiles and furniture design to build an unrivalled portfolio in upholstery fabrics that meets buyer's needs every time. Featuring a wide colour range, ultimate value for money and excellent reliability in the supply chain.*

Composition

/ faceside 100%PES
/ backside 100%PES
/ flatweave

Suitable for

sofa's, beds, chairs with fitted and loose fitting upholstery



beige 05



blush 92



charcoal 79



cognac 28



coral 95



darkblue 48



darkbrown 18



desert 109



darkgrey 68



espresso 123

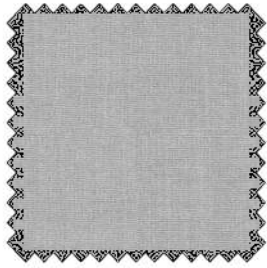


gold 132

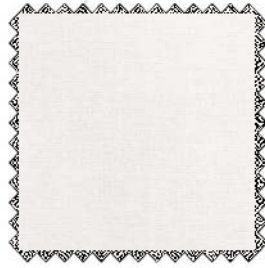


hunter 156

Please note: colours may vary according to your screen settings.



lightgrey 60



linen 110



liver 10



mustard 06



natural 01



niagara 158



ocre 23



pale 200



steel 149



taupe 12



thyme 206



tobacco 111

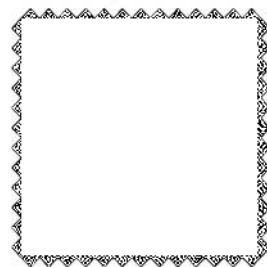
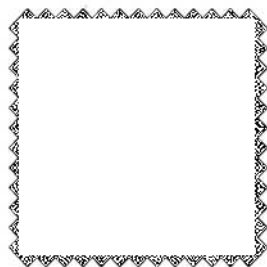
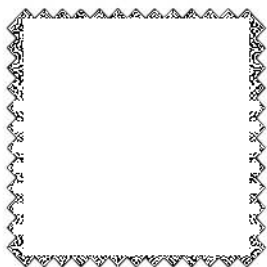
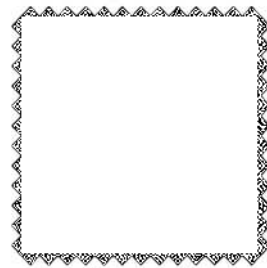
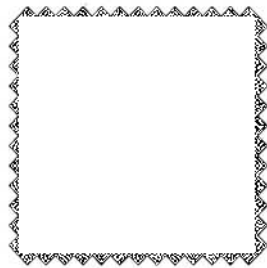
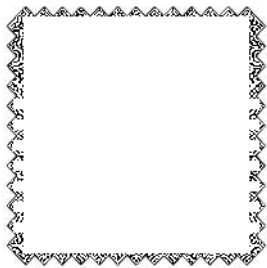
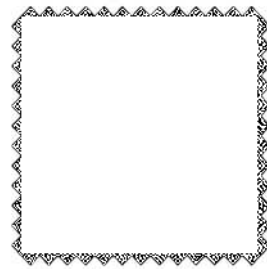
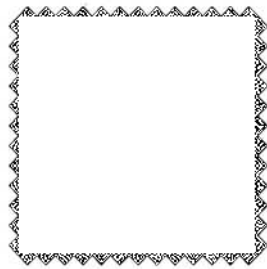
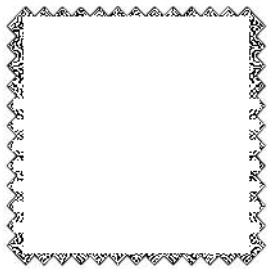
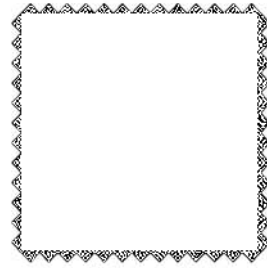
Please note: colours may vary according to your screen settings.



turtle 88



zinc 167



Please note: colours may vary according to your screen settings.

Cape - Article passport


A wonderful fine woven quality with a natural and matte look.

Available from stock in a wide range of contemporary and commercial colours.

Product characteristics

Productgroup	flatweave
Applications	sofa's, beds, chairs with fitted and loose fitting upholstery
Composition faceside	100%PES
Composition backside	100%PES
Bonding	non-woven
Statistic code	54075200
Dyeing method	piece dyed
Available colours	26
Packaging	transparent plastic

Durability specifications

Test	Test specification	Executed by laboratory:	Unit	Testresult		Norm RAL GZ 430/4:2019-01		Norm DIN EN 14 465:2006-09
				Dry	Wet	DGM	DGM+	
Abrasion resistance - yarn breakage	DIN EN ISO 12947-1:2007-04, DIN EN ISO 12947-2:2017-03	CTL	cycles	>100.000		min. 12.000	min. 16.000	A
Pilling	DIN EN ISO 12945-2:2000-11. 2000 cycles	CTL	grade	4		min. 3-4	min. 4	B
Colour fastness to light	DIN EN ISO 105-BO2:2014-11. Process 3, exposure level 5							
	light colours	CTL	grade	4-5		min. 4	min.5	B-C
	middle colours	CTL	grade	4		min. 4	min.5	C
Colour fastness to rubbing	DIN EN ISO 105-X12:2016-11							
	light colours	CTL	grade	4-5	4	dry: 4, wet: 3	dry: > 4, wet: 3-4	A/A
	middle colours	CTL	grade	4-5	4-5	dry: 4, wet: 3	dry: > 4, wet: 3-4	A/A
dark colours	CTL	grade	4-5	3	dry: 4, wet: 3	dry: > 4, wet: 3-4	A/B	
	Ignitability (cigarette test)	 BS 5852 part 1 (1979) from The Furniture and Furnishing (Fire) (Safety) regulations: 1988 No. 1324. Schedule 4 part 1 Ignition source 0: cigarette	CTL	passed				

Processing specifications

Minimum workable width in centimeters	± 143							
Roll length in meters	± 40							
Material weight in grams per linear meter	± 522							
Test	Test specification	Executed by laboratory:	Unit	Testresult		Norm RAL GZ 430/4:2019-01		Norm DIN EN 14 465:2006-09
				Warp	Weft	DGM	DGM+	
Tensile strength	DIN EN ISO 13934-1:2013-08	CTL	Newton	1.682	747	min. 350	min. 400	A/A
Tear growth resistance	DIN EN ISO 13937-3:2000-06	CTL	Newton	158,1	89,3	min. 25	min. 30	A/A
Resistance to seam slippage	DIN EN ISO 13936-2:2004-07. Load 180 N	CTL	mm	1,5	1,5	max. 5	max. 4	A/A
Delamination	DIN 53530:1981-02	CTL	Newton	31,0	23,9	n/a	n/a	n/a
Chemical substances	REACH	Centexbel		passed				
	Oeko-Tex, product class II	Centexbel		certified				

Cleaning specifications

Test	Test specification	Executed by laboratory:	Unit	Testresult		Norm RAL GZ 430/4:2019-01		Norm DIN EN 14 465:2006-09
				Warp	Weft	DGM	DGM+	
Dimensional change for washing 30 degrees celcius / air drying	DIN EN ISO 5077:2008-04, DIN EN ISO 6330:2013-02, DIN EN ISO 3759:2011-08	CTL	%	-1,2	-0,3	n/a	n/a	A/A



- Dirt and damp prevention treatment applied.
 - We recommend to wash the cover inside out and immediately place the cover back to the piece of furniture, slightly damp, after washing.
 - Please note that during washing the damp- and dirt prevented treatment will disappear faster.



Textafoam b.v.
 La Défense 11 | 5026 SC Tilburg
 P.O. Box 12 | 5050 AA Goirle
 The Netherlands

T +31(0)13 534 5934
 F +31(0)13 534 7586
 E info@textafoam.nl
 www.textafoam.nl