

ROHI

TOPIA

ROHI STOFFE GMBH / schoenlinderstr. 1, 82538 geretsried, germany / t +49-8171-93540 / f +49-8171-935499 / info@rohi.com / www.rohi.com

ROHI

GEWEBEBESCHREIBUNG

Dessin: TOPIA
Material: 95% WW 5% PA
Gewicht ca.: 440 g/m² - 660 g/lfm
Breite ca.: 150 cm

QUALITÄTSBESCHREIBUNG

Scheuerfestigkeit: 50.000 Touren DIN EN ISO 12947-2

Flammschutz: bitte angeben
FAR 25.853 (12 Sek. vertikal)
CAL TB 117 - 2013
DIN 4102-1 B2
EN 13501-1
EN 1021 -1 und -2
BS 5852:1979 (part1)
BS 5852:2006 (part2) Crib5
BKZ: 5,3 SN 198898
UNI 9175 (1 IM)

IMO: 2014/90/EU Schiffsausrüstungsrichtlinie
Bahn: EN 45545-2, R21, ISO 5660-1 (HL3)

Akustik: R_w=881 Pa s/m DIN EN 29053 Strömungswiderstand
Schallabsorption: geräfft: α_w = 0,80 (H) / B / ISO 11654
Ökologie: RAL-UZ 117 Anlage 2+3
Lichtdurchlässigkeit: EN 410 (DIN EN 14501)
Lichtechtheit: min. 5-8 EN ISO 105-B02
Pilling: min. 4-5 EN ISO 12945-2
Dimout Option auf Anfrage

QUALITÄTSMERKMALE – ROHI WOLLE

natürlich nachwachsender Rohstoff
Wolle ist von Natur aus schwer entflammbar,
pflegeleicht, atmungsaktiv und schmutzabweisend
langlebig, hoch strapazierfähig
reine Schurwolle – Kammgarnqualität

QUALITÄTSMERKMALE – ROHI STOFFE

Garnfärbung für bestmögliche Farbbrillanz
und hohe Lichtechtheit
Spezialausrüstung gegen Schrumpfung und Pillingneigung
Produktion und Design in Deutschland seit 1933
individuelle Stoffentwicklung
für Architektur- und Designkonzepte

DESCRIPTION OF FABRICS

Design: TOPIA
Content: 95% WW 5% PA
Weight approx.: 440 g/m² - 660 g/lm
Width approx.: 150 cm

QUALITY DETAILS

Abrasion: 50.000 rubs DIN EN ISO 12947-2

Flammability: please specify
FAR 25.853 (12 sec. vertical)
CAL TB 117 - 2013
DIN 4102-1 B2
EN 13501-1
EN 1021 -1 and -2
BS 5852:1979 (part1)
BS 5852:2006 (part2) Crib5
BKZ: 5.3 SN 198898
UNI 9175 (1 IM)

IMO: 2014/90/EU Marine Equipment Directive (MED)
Train: EN 45545-2, R21, ISO 5660-1 (HL3)

Acoustic: R_w=881 Pa s/m DIN EN 29053 flow resistivity
Sound absorption: folded: α_w = 0.80 (H) / B / ISO 11654
Ecology: RAL-UZ 117 Attachment 2+3
Light transmission: EN 410 (DIN EN 14501)
Lightfastness: min. 5-8 EN ISO 105-B02
Pilling: min. 4-5 EN ISO 12945-2
Dimout option on request

QUALITY CHARACTERISTICS – ROHI WOOL

natural, renewable material
wool is flame retardant, easy-care,
breathable and dirt resistant
long-lasting, hard-wearing
virgin wool – worsted yarn quality

QUALITY FEATURES – ROHI FABRICS

yarn dyed for brilliant colours and
good lightfastness
special finish: anti-shrink, anti-pilling
production and design 'Made in Germany' since 1933
development of individual fabrics for
architects' and designers' concepts

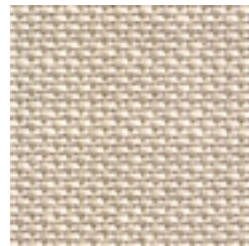


aktuellste Spezifikationen /
latest specifications:
rohi.com/topia

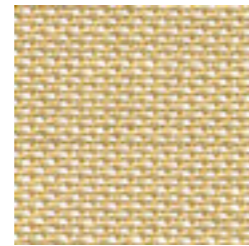
TOPIA



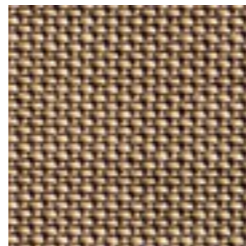
snow



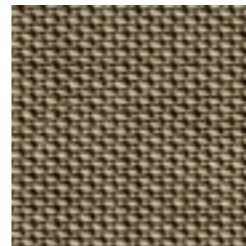
angora



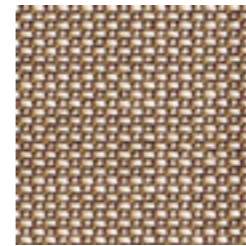
moon



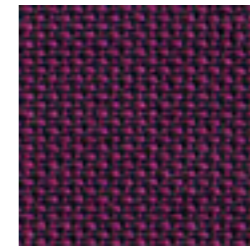
walnut



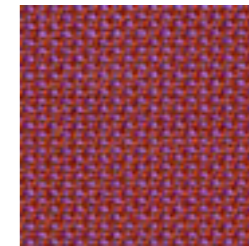
taupe



stone



viola



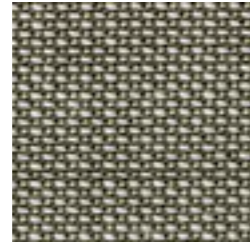
litchi



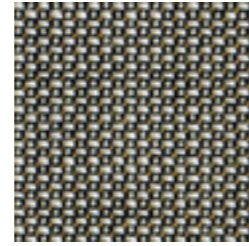
ROHI



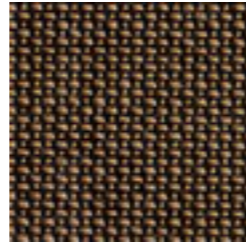
chrom



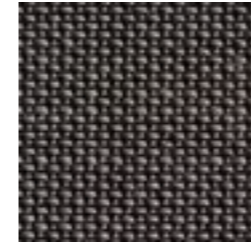
silver



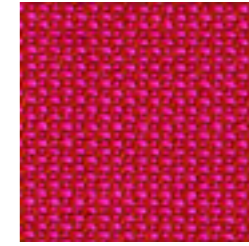
platin



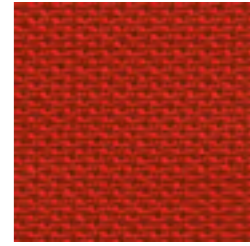
truffle



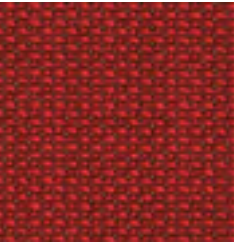
graphit



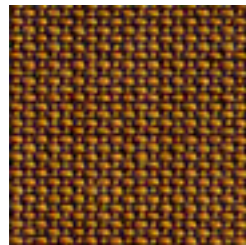
calluna



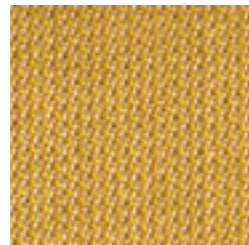
chilli



heart



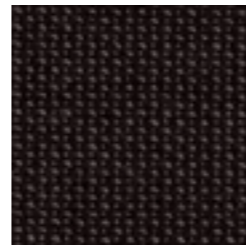
gold



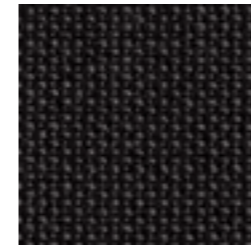
aureo



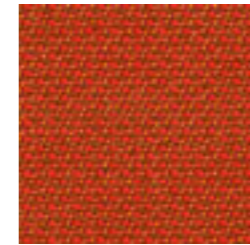
peat



lanoso

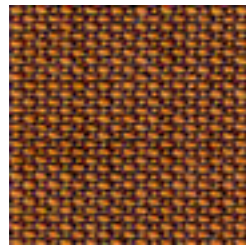


anthrazit

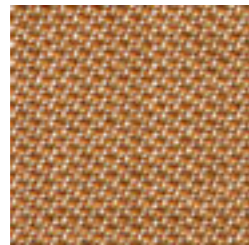


coral

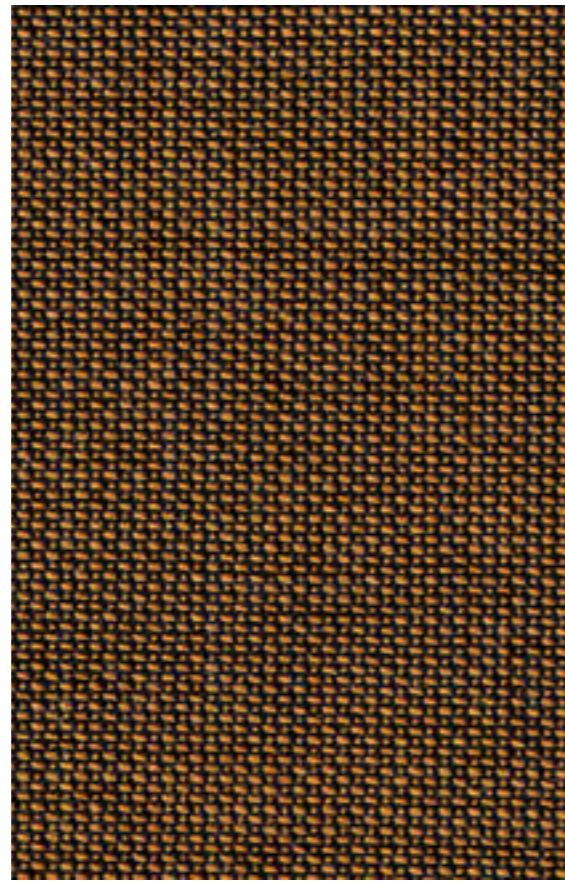
NATURAL MATERIAL
SOFT TOUCH
HIGHEND QUALITY
YARN DYED
VIRGIN WOOL
DESIGN
MANUFACTURE
EASY CARE
LASTING VALUE



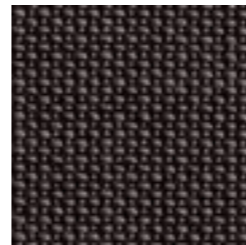
kupfer



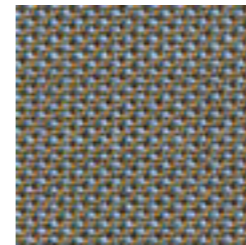
messing



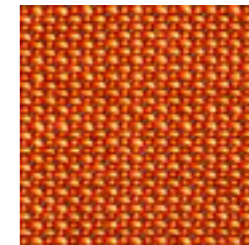
bronze



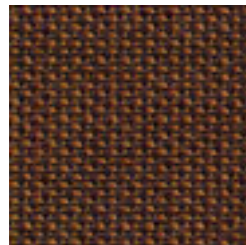
schiefer



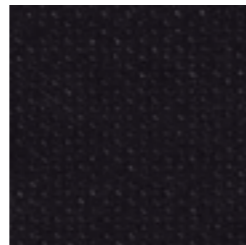
seashell



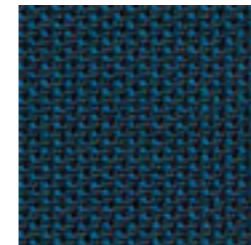
jelly



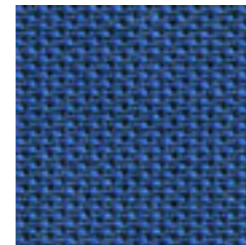
lord



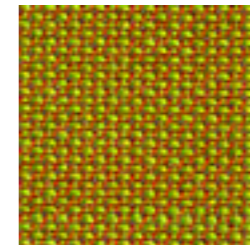
ebony



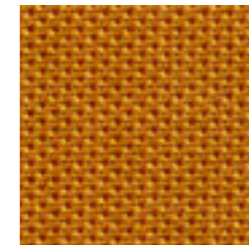
azur



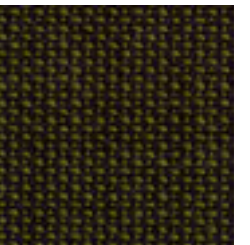
enzian



tivoli



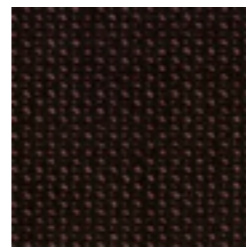
curry



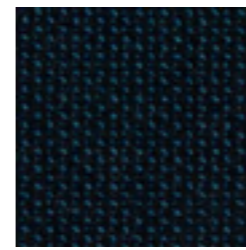
pinie



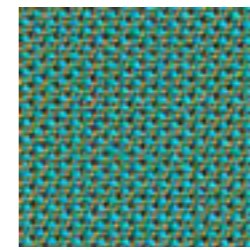
coffee



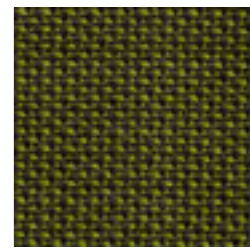
rosewood



orion



tropic



palm