



ROHI

OPERA

ROHI STOFFE GMBH / schoenlinderstr. 1, 82538 geretsried, germany / t +49-8171-93540 / f +49-8171-935499 / info@rohi.com / www.rohi.com

ROHI

#### GEWEBEBESCHREIBUNG

Dessin: OPERA  
Material: 96% WW 4% PA  
Gewicht ca.: 720 g/m<sup>2</sup> - 1010 g/lfm  
Breite ca.: 140 cm

#### QUALITÄTSBESCHREIBUNG

Scheuerfestigkeit: 90.000 Touren DIN EN ISO 12947-2

Flammschutz: (bei Bestellung bitte angeben)  
FAR 25.853 (12 Sek. vertikal)  
CAL TB 117 - 2013  
DIN 4102-1 B2  
EN 13501-1  
EN 1021 -1 und -2  
BS 5852:2006 (part1)  
BS 5852:2006 (part2) Crib5  
UNI 9175 (1 IM)  
IMO: MED 96/98/EG Schiffsausrüstungsrichtlinie

Lichtechtheit: min. 5-8 EN ISO 105-B02  
Pilling: min. 4-5 EN ISO 12945-2  
Akustik: R<sub>s</sub>=2078 Pa s/m DIN EN 29053 Strömungswiderstand  
Ökologie: RAL-UZ 117 Anlage 2+3

#### QUALITÄTSMERKMALE – ROHI WOLLE

natürlich nachwachsender Rohstoff

Wolle ist von Natur aus schwer entflammbar,  
pflegeleicht, atmungsaktiv und schmutzabweisend

langlebig, hoch strapazierfähig

Merinowolle – Kammgarnqualität

#### QUALITÄTSMERKMALE – ROHI STOFFE

Garnfärbung für bestmögliche Farbbrillanz  
und hohe Lichtechtheit

Spezialausrüstung gegen Schrumpfung und Pillingneigung

Produktion und Design in Deutschland seit 1933

individuelle Stoffentwicklung  
für Architektur- und Designkonzepte

#### EMPFOHLENE EINSATZBEREICHE

Objektbereiche und private Wohnräume  
mit sehr hoher Beanspruchung

#### DESCRIPTION OF FABRICS

Design: OPERA  
Content: 96% WW 4% PA  
Weight approx.: 720 g/m<sup>2</sup> - 1010 g/lm  
Width approx.: 140 cm

#### QUALITY DETAILS

Abrasion resistance: 90.000 rubs DIN EN ISO 12947-2

Flame resistance: (please specify when ordering)  
FAR 25.853 (12 sec. vertical)  
CAL TB 117 - 2013  
DIN 4102-1 B2  
EN 13501-1  
EN 1021 -1 and -2  
BS 5852:2006 (part1)  
BS 5852:2006 (part2) Crib5  
UNI 9175 (1 IM)  
IMO: MED 96/98/EC Marine Equipment Directive

Colour fastness to light: min. 5-8 EN ISO 105-B02  
Pilling: min. 4-5 EN ISO 12945-2  
Acoustic: R<sub>s</sub>=2078 Pa s/m DIN EN 29053 flow resistivity  
Ecology: RAL-UZ 117 Attachment 2+3

#### QUALITY CHARACTERISTICS – ROHI WOOL

natural, renewable material

wool is flame retardant, easy-care,  
active-breathing and dirt resistant

long-lasting, hard-wearing

Merino wool – worsted yarn quality

#### QUALITY FEATURES – ROHI FABRICS

yarn dyed for brilliant colours and  
good lightfastness

special finish: anti-shrink, anti-pilling

production and design 'Made in Germany' since 1933

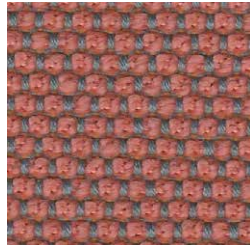
development of individual fabrics for  
architects' and designers' concepts

#### RECOMMENDED APPLICATION AREAS

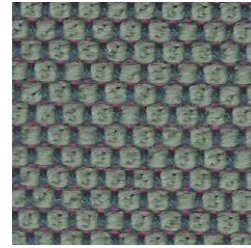
public and residential premises with  
heavy wear and tear



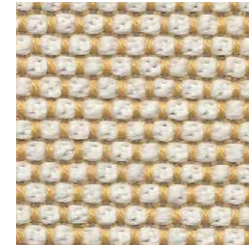
# OPERA



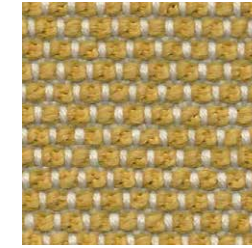
guave



aloe



sorbet



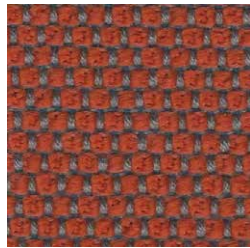
aureo



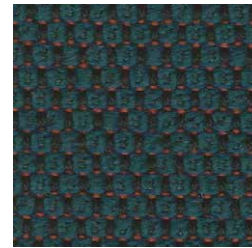
kristall



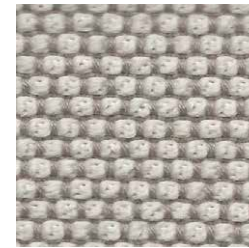
ROHI



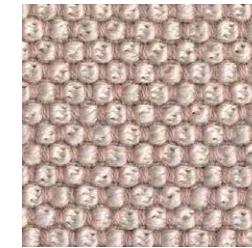
clementine



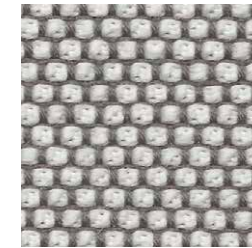
smaragd



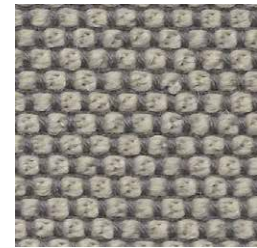
macadamia



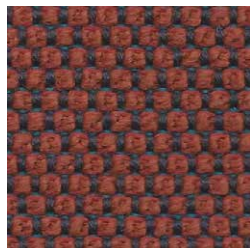
calla



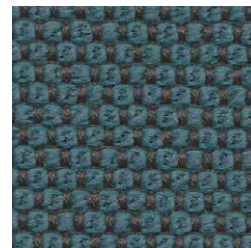
mirror



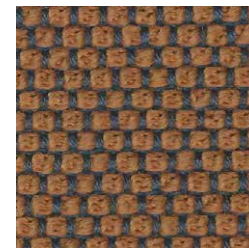
flanell



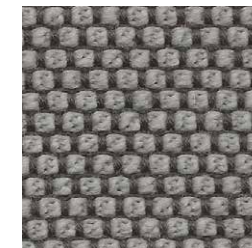
indio



delphi



brick

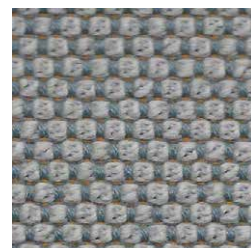


fango

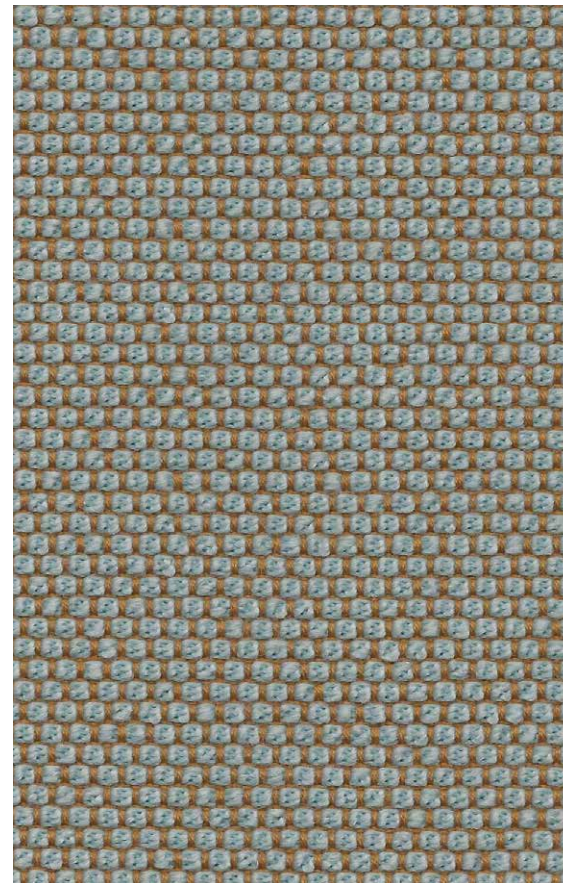
NATURAL MATERIAL  
SOFT TOUCH  
HIGHEND QUALITY  
YARN DYED  
MERINO WOOL  
DESIGN  
MANUFACTURE  
EASY CARE  
LASTING VALUE



bleu



lake



jade



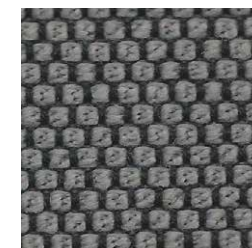
maple



taupe



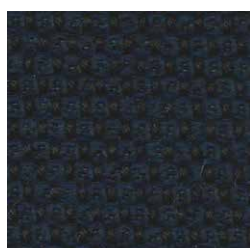
anthrazit



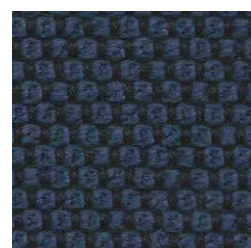
kies



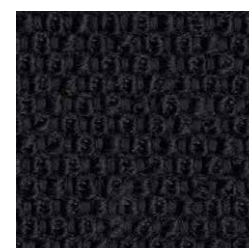
prime



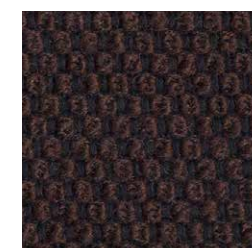
navy



delft



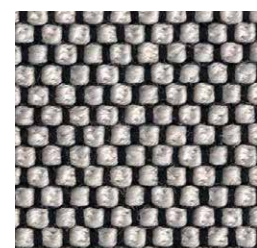
ebony



rosewood



carbon



pepper