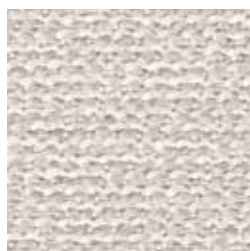


A close-up photograph of a textured fabric, possibly a hat or a piece of clothing, featuring a repeating pattern of small, rounded shapes in shades of blue and orange. The fabric is draped over a curved surface, creating soft shadows and highlights that emphasize its texture. In the upper center, there is a white square containing the text 'ROHI'. In the lower right corner, the text 'ARCO' is visible.

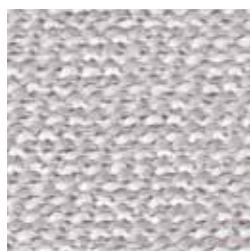
ROHI

ARCO

ARCO



calla



arctic



ice



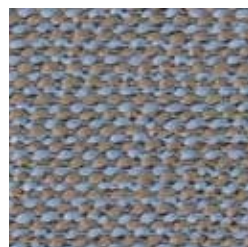
pebble



snow



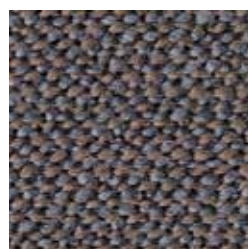
nube



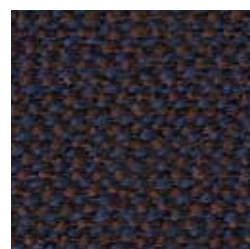
coast



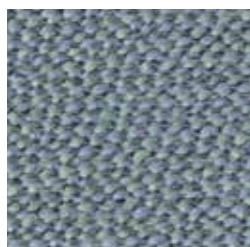
jasmin



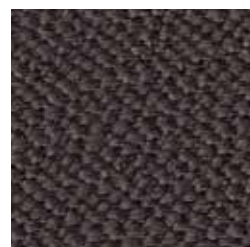
truffle



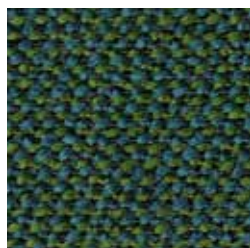
secret



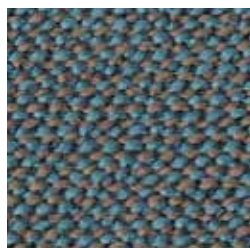
aqua



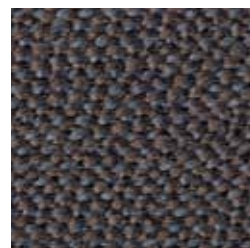
coffee



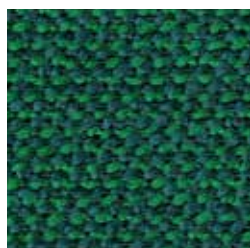
forest



pond



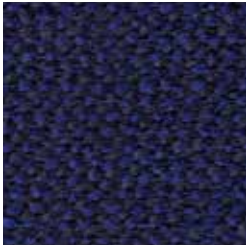
espresso



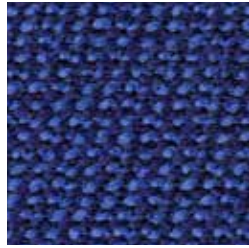
garden



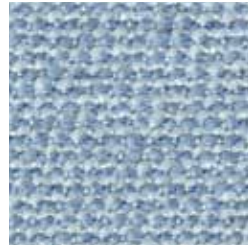
magma



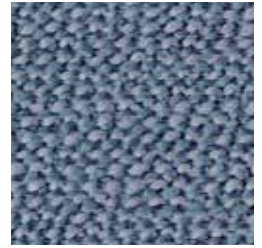
ink



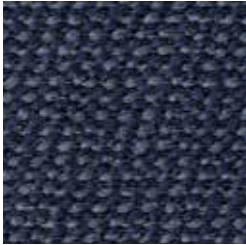
cobalt



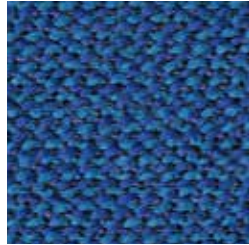
breeze



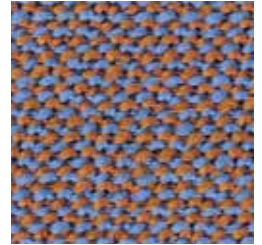
azur



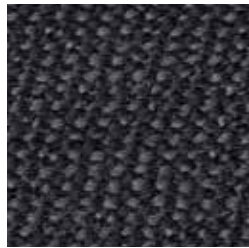
mountain



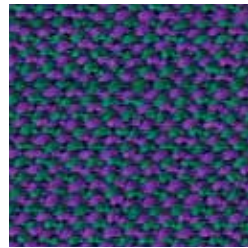
mare



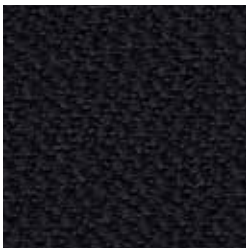
vivid



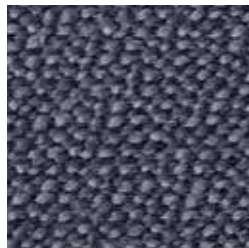
lanoso



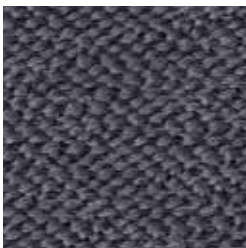
circus



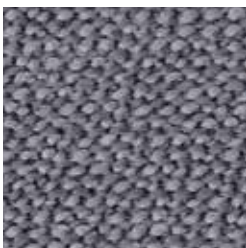
ebony



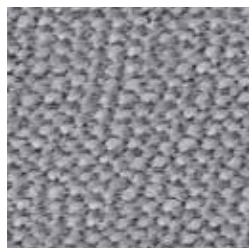
carbon



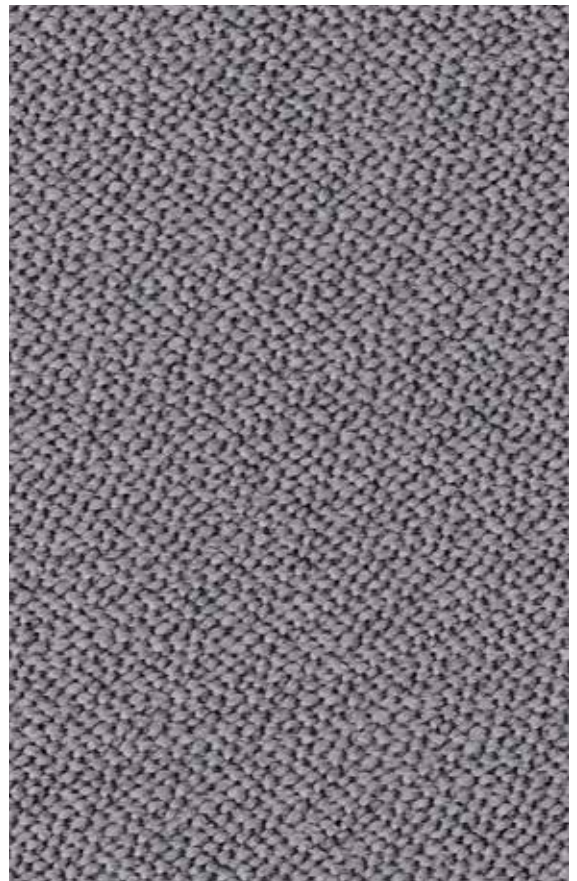
asphalt



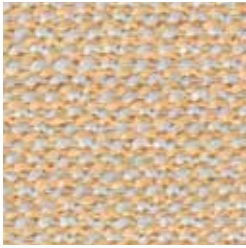
kies



fels



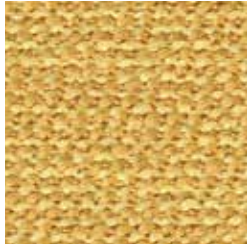
gravel



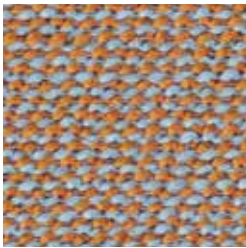
birch



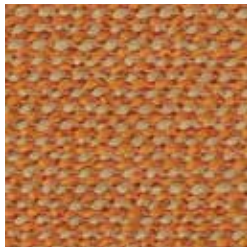
citron



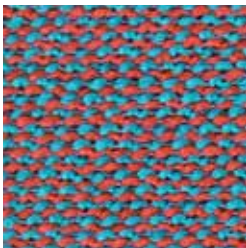
corn



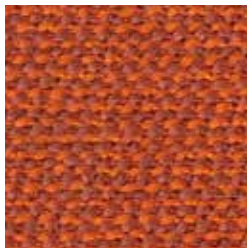
jade



safran

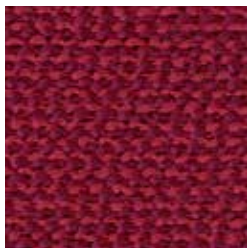


samba

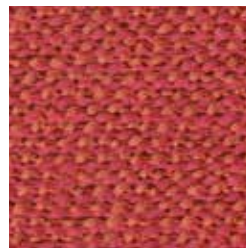


sunset

NATURAL MATERIAL
SOFT TOUCH
HIGHEND QUALITY
YARN DYED
VIRGIN WOOL
DESIGN
MANUFACTURE
EASY CARE
LASTING VALUE



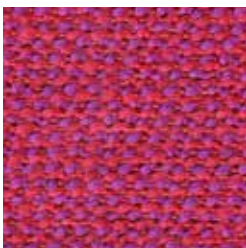
cherry



fire



guave



magenta



blossom

ROHI

GEWEBEBESCHREIBUNG

Dessin: ARCO
Material: 95% WV 5% PA
Gewicht ca.: 700 g/m² - 980 g/lfm
Breite ca.: 140 cm

QUALITÄTSBESCHREIBUNG

Scheuerfestigkeit: 70.000 Touren ISO 12947-2
Lichtdurchlässigkeit: DIN EN 410
Lichtechtheit: ≥ 5 ISO 105-B02 (Garnfärbung)
Pilling: ≥ 4-5 ISO 12945-2

reine Schurwolle – Kammgarnqualität
pflegeleicht, atmungsaktiv und schmutzabweisend
langlebig, hoch strapazierfähig
Garnfärbung für bestmögliche Farbbrillanz
und hohe Lichtechtheit
nicht direkter Sonneneinstrahlung aussetzen
Produktion und Design in Deutschland seit 1933

FLAMMSCHUTZ

Wolle ist von Natur aus schwer entflammbar
rohi Wollstoffe erfüllen folgende Normen
ohne zusätzliche Flammenschutzrüstung:
CAL TB 117 - 2013
DIN EN 1021-1/-2
BS 5852 Part 1: 1979
UNI 9175 1 IM
IMO 2014/90/EU Schiffsausrüstungsrichtlinie

mit optionaler Flammenschutzrüstung:
BS 5852: 2006 Crib5
DIN 4102-1 B2
DIN EN 13501-1 E
FAR 25.853 12 Sek. vertikal
BKZ 5.3 SN 198898
NF D60-013 (Art. AM 18)

AKUSTIK

Strömungswiderstand: $R_s = 507$ Pa s/m ISO 9053-1
Schallabsorption gerafft: $\alpha_w = 0,85/ B$ ISO 11654

ÖKOLOGIE

natürlich nachwachsender Rohstoff
RAL-UZ 117 Anlage 2+3
IWTO Guidelines for Wool Sheep Welfare
FR-frei
AB 2998 (US Export Norm)
REACH (EU Export Norm)

WEITERE MERKMALE

Spezialausrüstung gegen Schrumpfung und Pillingneigung
Dimout Option auf Anfrage
individuelle Stoffentwicklung
für Architektur- und Designkonzepte
Sonderfarben ab 25 lfm

DESCRIPTION OF FABRICS

Design: ARCO
Content: 95% WV 5% PA
Weight approx.: 700 g/m² - 980 g/lm
Width approx.: 140 cm

QUALITY DETAILS

Abrasion: 70.000 rubs ISO 12947-2
Light transmission: DIN EN 410
Lightfastness: ≥ 5 ISO 105-B02 (yarn dyed)
Pilling: ≥ 4-5 ISO 12945-2

virgin wool – worsted yarn quality
easy care, breathable and stain-resistant
durable, hard-wearing
yarn dyed for brilliant colours and
good lightfastness
don't expose to direct sunlight
production and design 'Made in Germany' since 1933

FLAME RESISTANCE

wool is naturally flame retardant
rohi wool fabrics satisfy the following standards
with no additional flame retardant finish:
CAL TB 117 - 2013
DIN EN 1021-1/-2
BS 5852 part 1: 1979
UNI 9175 1 IM
IMO 2014/90/EU Marine Equipment Directive (MED)

with additional flame retardant finish:
BS 5852: 2006 Crib5
DIN 4102-1 B2
DIN EN 13501-1 E
FAR 25.853 12 sec. vertical
BKZ 5.3 SN 198898
NF D60-013 (Art. AM 18)

ACOUSTIC

Flow resistivity: $R_s = 507$ Pa s/m ISO 9053-1
Sound absorption folded: $\alpha_w = 0.85/ B$ ISO 11654

ECOLOGY

natural, renewable material
RAL-UZ 117 Attachment 2+3
IWTO Guidelines for Wool Sheep Welfare
FR-free
AB 2998 (US export standard)
REACH (EU export standard)

MORE FEATURES

special finish: anti-shrink, anti-pilling
dimout option on request
development of individual fabrics for
architects' and designers' concepts
special colours from 25 lfm



flame retardant



aktuellste Spezifikationen /
latest specifications:
rohi.com/arco