

steppe

upholstery fabric

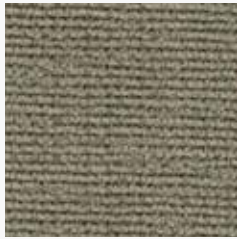
compositon	57% wv, 38% pes, 5% pa
colourways	26
width	140 cm
repeat	-
weight	580 (g/m1)
lightfastness	5-6 (scale 1-8)
abrasion	90000 (martindale)
pilling	4 (scale1-5)
cleaning	⊗ ⊗ ⊗ ⊗ ⊗ ⊗
shrinkage	2%
flame resistance	BS 5852 0+1

de ploeg:



de ploeg:

steppe colours



05



07



08



09



11



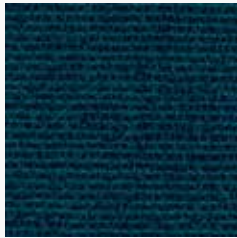
21



40



45



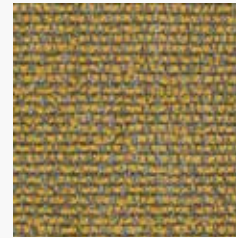
48



52



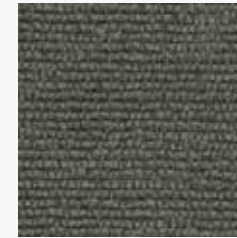
54



68



70



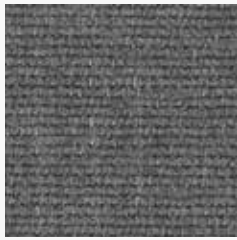
75



77



78



80



81



82



83



84



85



86



87



88



98