

# ploegwool

---

upholstery fabric

compositon	100% wo
colourways	64
width	140 cm
repeat	-
weight	870 (g/m1)
lightfastness	6 (scale 1-8)
abbrasion	90000 (martindale)
pilling	3-4 (scale1-5)
cleaning	⊗ ⊗ ⊗ ⊗ ⊗ ⊗
shrinkage	2%
flame resistance	BS 5852 part 1 + 2 crib 5
flame-retardant	yes
labels	IMO OEKOTEX

de ploeg:



# de ploeg:

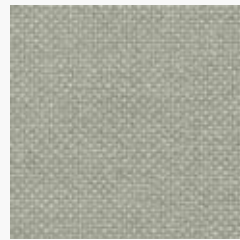
# ploegwool colours



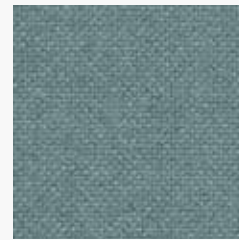
00



02



03



04



08



09



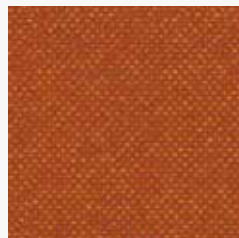
11



13



14



16



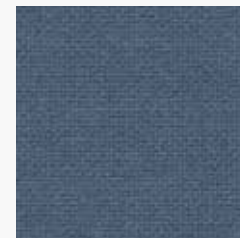
17



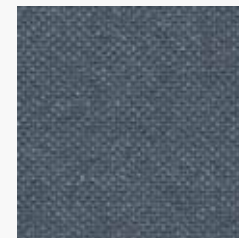
18



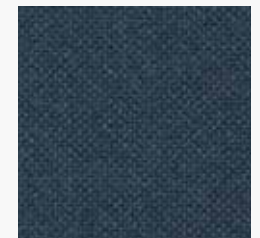
19



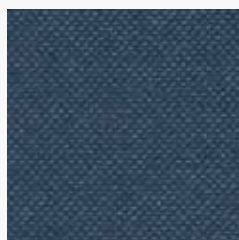
23



24



27



28



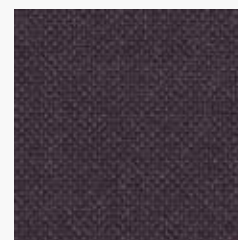
29



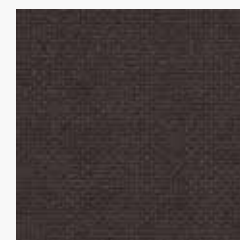
30



33



37



38



40



41



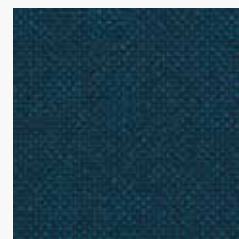
42



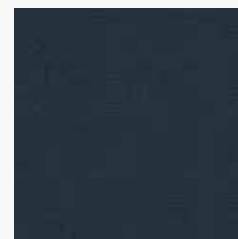
43



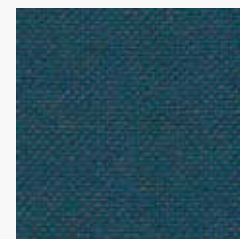
44



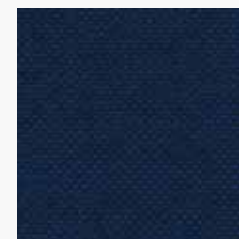
45



46



47



48



49

# de ploeg:

# ploegwool colours



50



51



52



53



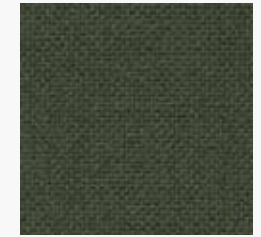
54



55



56



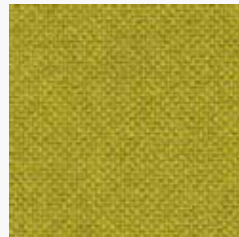
57



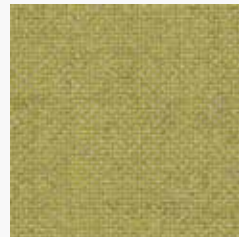
58



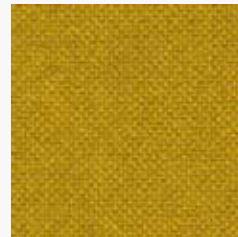
59



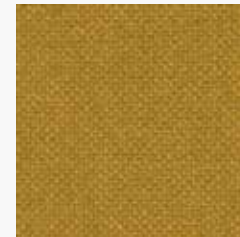
61



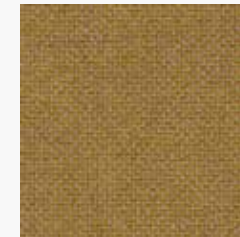
63



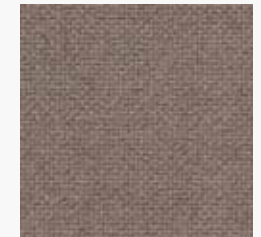
66



67



69



71



73



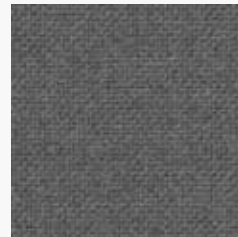
77



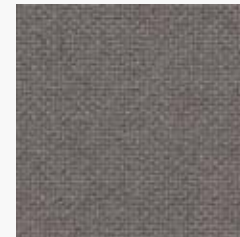
78



79



80



82



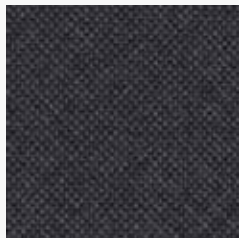
83



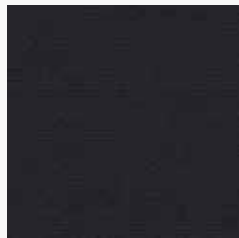
84



86



87



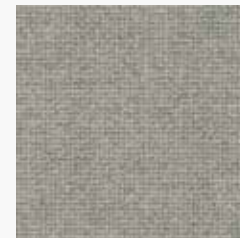
88



89



91



92



97



98